

INSPIRATION | INNOVATION | FURNITURE | EQUIPMENT | SUPPLIES

Specialist machinery, equipment and furniture for D&T



Savings on
all your D&T
favourites.
Take a peek!

In stock for a fast
delivery!



- What's inside?
- 💡 Laser cutters
 - 💡 Hegner scrollsaws
 - 💡 Machinery
 - 💡 Tools and consumables
 - 💡 New Akira™ competition!
 - 💡 Safety and protection
 - 💡 Akira™ workbenches
 - 💡 Maintenance and servicing

VISIT OUR RESOURCE HUB FULL OF USEFUL IDEAS AND INSPIRATION

Practical learning: Spaces, tools and support for education.

We specialise in equipping schools with the tools, technology, and expertise needed to nurture creativity and innovation in Design & Technology.

With over three decades of experience, we supply education-ready machinery, equipment, safe and ergonomic furniture, and essential consumables.

We design and deliver learning environments that inspire creativity in practical, technical education, supporting students and educators every step of the way.

Our solutions are designed to meet the unique needs of your department.



What's inside..

CONTENTS	PAGE
CAD/CAM - Laser cutters	4
CAD/CAM - Materials	8
Fabrication - Hegner	10
Fabrication - Machinery	14
Fabrication - Tools	16
Fabrication - Materials	19
Robotics	20
Safety and protection	24
Materials	28
Fixings and finishing	30
Arts and Crafts	32
Benches and storage	34
Akira™ Workbenches	38
Maintenance and servicing	42

Specialist machinery and equipment suppliers since 1986.

Delivery charges

FREE delivery on all stocked items of £75 and over. Orders of less than £75 are subject to a £7.50 delivery charge (within UK mainland).

We aim to dispatch all stocked items ordered before 11am, on the same day. For full delivery charges, please visit our Terms and Conditions wf-education.com/terms-and-conditions

Returns

All hazardous goods/chemicals are non-returnable. Any direct or special order items are non-returnable unless faulty.

For full exclusions and returns, please visit our Terms and Conditions wf-education.com/terms-and-conditions.

Need advice?

Please, call our friendly Customer Support team (Mon - Fri, 8.30am - 5pm, excl. Bank Holidays) on 01743 812 200 for advice on your delivery options, prices, and product selection. We offer additional delivery options including guaranteed next day.

We also have an experienced Technical Team to answer all your questions regarding our products, troubleshooting, or any health and safety queries.



These mailers are **100% recyclable**

The important bit...

T&C's: All prices shown in this brochure are ex. VAT. Prices are correct at the time of print. For up-to-date pricing, please, refer to our website. All products featured in this brochure are subject to availability. Free delivery is valid to UK mainland addresses only. TSL reserves the right to stop or amend any promotions at any time. All hazardous goods, chemicals are non-returnable.

For full and most up-to-date terms and conditions, please, visit wf-education.com/terms-and-conditions

Your brochure highlights

We have carefully curated this brochure to provide you with the everyday essentials needed to deliver an exceptional D&T education. Here's a quick look at some of the standout highlights waiting for you inside!

Page 6 | AI in design education?

Take a look at our Akira™ Laser Cutting WorkStation featuring a powerful, xTool desktop laser cutter with advanced tech features like AI supported design software. Read more on page 6.



Page 10 | Hegner – a brand you know you can trust!

The trusted choice for schools worldwide! Enhance your experience with our FREE Hegner resources. **Health and Safety musts, Spare Parts Finder...**we have everything you need to make the most of your equipment. Read more from page 10.



Page 22 | Pewter | An interdisciplinary opportunity?

Discover ways that projects using pewter can enhance interdisciplinary learning! This versatile material could bring new life to your D&T workshop! Find out more on page 23.



Page 40 | NEW Aesthetics Guide

Want your school to stand out? Our guide shows how thoughtful aesthetics, and personalisation can transform your D&T spaces into inspirational, functional learning environments that attract students and parents alike. Learn more on page 40.



Page 41 | Success stories – transforming spaces!

See how we've turned visions into reality with our bespoke D&T and STEAM spaces! Modern refurbishments, brand-new installations, explore case studies that showcase our expertise and inspire new possibilities. Explore the details on page 41.



Enjoy browsing!

We are specialist providers of Laser Cutters for Education

We have been at the forefront of providing education-ready laser cutting solutions to schools worldwide for over three decades.

We've built long-standing relationships with top laser brands, ensuring that our products are not only reliable but also innovative and trusted by educators worldwide.



We are the trusted provider for schools across the UK and beyond!

Why choose our laser solutions?

Unmatched experience

We have over 30 years of expertise. We understand the unique needs of educators and have helped countless schools integrate laser technology into their workshops.

Expert guidance

Our Product Specialist team will work with you to identify the perfect laser solution for your budget, specific projects, and workshop requirements.

Guidance and support

From technical assistance to in-house maintenance, our dedicated Customer Support team ensures your laser cutter operates efficiently for years to come.

Trusted brands

We only supply reliable, industry-leading laser cutter brands that have been proven in the market for decades. Ensuring quality and performance you can trust.

Leading technologies

Stay ahead with our latest addition—a smart, desktop laser featuring AI-powered software that transforms creativity and productivity in the classroom.

Need a sounding board? Our team is here to help!

Contact our Product Specialists today for a no-obligation chat or request a quote.



Power and reliability

GCC laser cutters are powerful and reliable machines, perfect for D&T departments where handling volumes of work and quality, matters.



Equipped with CO₂ laser tubes, they deliver high wattage for precision cutting and engraving. With a range of user-friendly features, these laser cutters offer safety and stability, earning them recognition and widespread popularity in educational settings.

Key advantages of investing in a GCC laser:

DIRECT CAD INTEGRATION

Output designs using the dedicated printer driver compatible with CorelDraw, 2D Design, Artcam, and more - straight from your CAD software.

WORKSHOP-SAFE DESIGN

Equipped as standard with interlocked doors, emergency stop, a key switch, and an extraction interface, ensuring safe operation in educational settings.

INDUSTRIAL-GRADE DURABILITY

Built with heavy-duty, industrial-quality construction to handle regular use in demanding practical, technical environments—guaranteeing a long-term, reliable investment.

PRECISION CUTTING & ENGRAVING

High-speed DC servo motors provide smooth, uninterrupted movement for faster, more precise results compared to stepper motors.

TIME-SAVING AUTOFOCUS

A patented autofocus gauge ensures pinpoint accuracy without manual adjustment, saving setup time for every project.

SUPERIOR PERFORMANCE & LONGEVITY

Available with an economical glass tube and a high performance metal tube for professional-grade cutting and engraving to match your applications.

Explore the full details of our GCC range online...



X252 80w Glass Tube Laser Package

The X252 laser Cutter offers an economical alternative for laser cutting and engraving. Equipped with dependable sealed CO₂ laser, it offers a reliable source of laser power for your cutting and engraving requirements at a much lower cost.

180-503



Mercury 30W Laser Cutter Package

The LaserPro Mercury III carries the fine tradition of the Mercury series to provide stable engraving quality. The Mercury III is reinforced with new features, including key switch, user-friendly control panel, and SmartCENTER

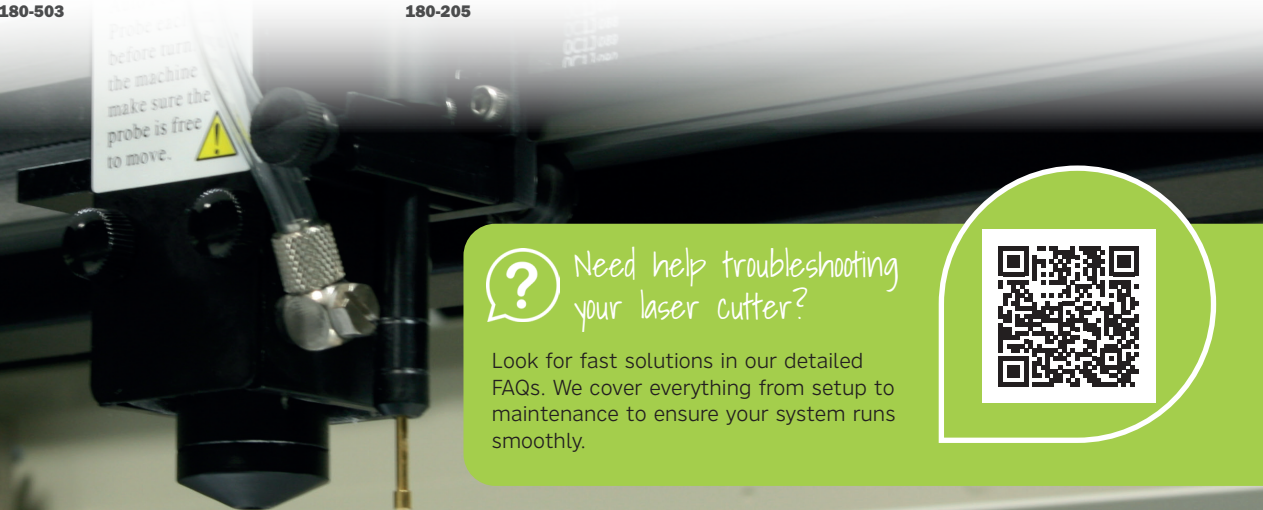
180-205



Spirit GLS 40 Watt Laser Package

The Spirit GLS is the flagship model of the LaserPro range offering further advanced features such as SmartACT and Truelmage, plus a large work area of 860 x 610mm.

185-004



Need help troubleshooting your laser cutter?

Look for fast solutions in our detailed FAQs. We cover everything from setup to maintenance to ensure your system runs smoothly.



Built for safety | Laser Cutter Education Packages from TSL

Our Laser Cutters are supplied as a comprehensive education package, ensuring you have everything you need to get started without the hassle of sourcing additional equipment.

Safe and clean operation

Safety is our priority, especially in educational environments. An efficient extraction system is a must when using a laser cutter, to extract fumes and re-circulate clean air. All of our GCC laser packages are supplied with either a BOFA Oracle iQ or AD1000 iQ featuring an in-built compressor and an intelligent operating system. They also interface with the laser cutter to ensure that it never operates without the extraction unit.



Keep your laser cutter running smoothly!

Regular maintenance is key to safe and efficient operation. Download our **Laser Cutter Maintenance Checklist** to stay on top of essential tasks and ensure a long lifespan for your machine. Scan the code to access this FREE resource!

AI in design education?

In education, Artificial Intelligence is rightly gaining attention for its potential to support teaching and learning methods. But how can AI help teachers and students in practical, technical design education? Paul Woodward, Curriculum Consultant for Design and Technology Association shared his take with us:

"Using AI to effectively 'render' your drawings, models, etc., is no different from rendering a CAD image. It's still your idea; you have created the shape and form, and you are using AI to 'look into the future' to see a developed idea. If you don't like what you see, you can change the design and save months of wasted development. I have used it for that very purpose, and industry moves fast, so why make students take a laborious route to design development just to provide evidence. All creative tools are valid and should be used where appropriate.

Right tool for the job, as they say."



Read the full blog on our Resource Hub!



Get to know xTool P2 Laser Cutter...

The xTool P2 is one of the smartest, most capable, and easiest-to-use desktop laser cutters available for education, find out why!



Easy-to-use, easy-to-move | Smart Laser Cutting

A highly mobile, easy-to-use workstation with on-board extraction and material storage boasting leading laser cutting and enhanced engraving performance with the xTool P2.

AI-driven software, dual camera setup, and rapid engraving bring smart laser cutting into your workshop.

Akira™ Laser Cutting WorkStation

Supplied with:

xTool P2 desktop laser cutter and extraction, plus underbench storage



55W
The most powerful
desktop CO₂ Laser Cutter
600 mm/s¹
Superior engraving efficiency

Precision Captured

A close-up of a black lens or camera component with a silver ring.

Enclosed design
Ensure safety

A black shield icon with a white checkmark inside.

Bed size

680 x 360mm

Curved Surface Engraving

A diagram showing a curved surface with a grid pattern being engraved.

On-board extraction

A diagram showing the workstation with a white extraction system on top.

AI-supported design
experience

A laptop displaying several AI-generated images of cats.

All-in-one
mobile
unit

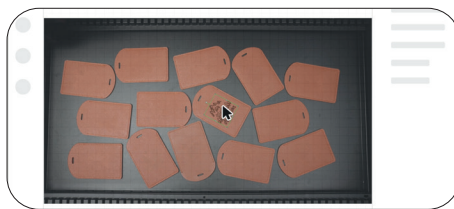
A close-up of a black castor wheel with a metal plate.

Advanced technologies...



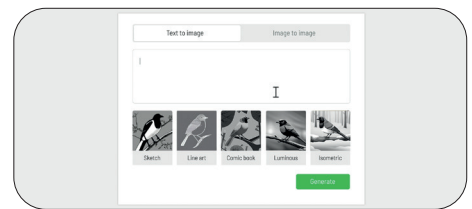
Curved surface engraving

xTool P2's 3D Curve™ Engraving feature expands creative possibilities with a variety of curved materials. The easy-to-use wizard lets you map focal points across a curved surface, generating perfect engraving and cutting across the design.



Batch fill feature

Superior efficiency on class projects. With one click, multiple objects inside the workspace can be automatically recognised and intelligently filled with a design.



AI-supported design process

Type your words, and let AI instantly create a visual representation of your vision. xTool's Creative Space software includes a built-in text-to-image generator, making concept designs laser-ready in seconds.



Learn more about this
mobile WorkStation



Visit: shop.wf-education.com/dnt

customer.support@wf-education.com

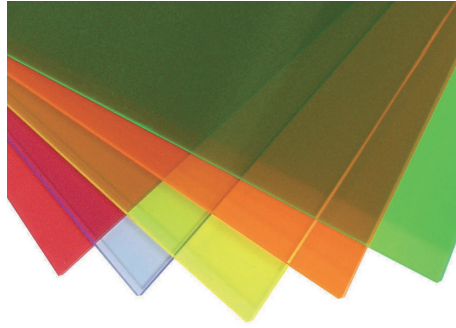
01743 812 200



Cast Acrylic Sheet Opaque Assorted 600 x 400 x 3mm

Pack of 8 sheets, containing one each of blue, red, green, yellow, orange, black, white and purple

490-041	600 x 400 x 3mm	£49.95	Pack of 8
490-217	1000 x 500 x 3mm	£130.00	Pack of 10
450-020	1000 x 600 x 3mm	£164.00	Pack of 10



Cast Acrylic Sheet Fluorescent 600 x 400 x 3mm

Pack of 5 sheets, containing one each of blue, yellow, pink, green and orange.

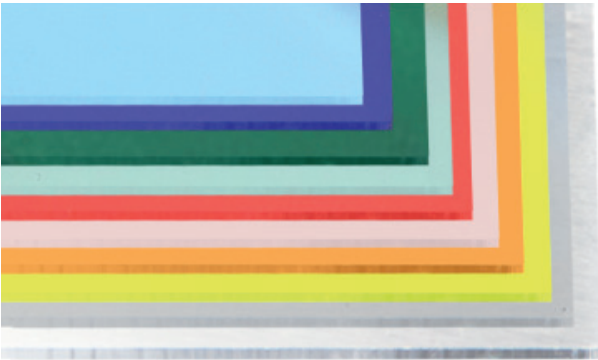
490-043	600 x 400 x 3mm	£42.95	Pack of 5
490-315	1000 x 500 x 3mm	£87.00	Pack of 5



Cast Acrylic Sheet Transparent Assorted 600 x 400 x 3mm

Pack of 6 sheets, containing one each of blue, red, green, purple, smoked and orange.

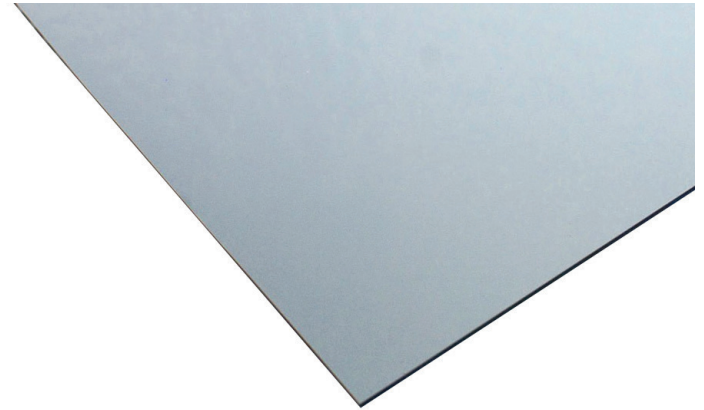
490-042	600 x 400 x 3mm	£38.00	Pack of 6
490-219	1000 x 500 x 3mm	£139.00	Pack of 10



Cast Acrylic Sheet Frost Assorted Colours 600 x 400 x 3mm

Pack of 12 sheets, containing two each of crystal clear, polar frost and one each of electric blue, sapphire blue, emerald green, glacier green, chilli red, blush pink, mandarin orange & citrus yellow.

450-074	600 x 400 x 3mm	£92.00	Pack of 12
450-007	1000 x 500 x 3mm	£170.00	Pack of 10



Extruded Mirror Acrylic Sheet 610 x 485 x 3mm

Single sided mirrored extruded acrylic with a mirror foil coating on one side of 3mm clear acrylic. Great for displays, custom mirrors, interior fittings and can be cut on a laser cutter, just ensure you cut the material on the non mirrored side.

490-207	610 x 485 x 3mm	£15.95	Each
----------------	-----------------	--------	------



Cast Acrylic Sheet Clear

Money saving bulk packs of high quality clear cast acrylic. Recommended for laser cutting and CNC machining, it provides impact and UV resistance and good thermal stability.

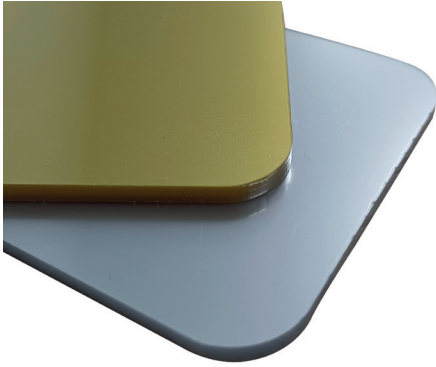
450-041 contains 5 sheets of 600 x 400 x 3mm clear cast acrylic.
490-908 contains 10 sheets of 1000 x 500 x 3mm clear cast acrylic.

450-041	600 x 400 x 3mm	£29.95	Pack of 5
490-908	1000 x 500 x 3mm	£124.00	Pack of 10



Don't forget!

As well as money saving bulk packs, all of our acrylic is available in single sheets, across all sizes and thicknesses and at competitive prices! Browse online!



Cast Acrylic Sheet Metallic

High quality cast acrylic with a metallic effect finish in a sheet size of 1010 x 440 x 3mm.

450-414	Gold	£25.00	Each
450-415	Light Silver	£25.00	Each



Rubber Stamp Material

A low odour material great for making personalised rubber stamps. Ideal for use on a laser cutter, A4 size sheet and 2.3mm thickness.

495-007	£12.90
----------------	--------



Poplar Plywood

High-quality Poplar Plywood sheet, very well suited to laser cutting. Measures 500 x 375mm and comes in packs of 12 sheets. Available in 4, 6 and 9mm thicknesses.

490-866	500 x 375 x 4mm	£79.00	Pack of 12
490-867	500 x 375 x 6mm	£127.00	Pack of 12
490-868	500 x 375 x 9mm	£139.00	Pack of 12



MDF Sheet

Grade E1 MDF low formaldehyde content. A versatile material great for laser cutting and general fabrication. MDF should be stored flat, in a dry, well ventilated area.

400-064	600 x 300 x 3mm	£65.00	Pack of 36
400-065	600 x 300 x 6mm	£94.00	Pack of 36
490-853	600 x 400 x 9mm	£59.00	Pack of 6



Best Seller!

CAD/CAM Eco-friendly Vinyl

Eco-friendly vinyl is PVC free which means no chlorine gases are released when burnt making it safe for use on a laser cutter.

Self adhesive and great for all kinds of indoor and outdoor applications with outdoor durability up to 5 years.

610mm wide 10m roll.

450-042	White	£31.50
450-043	Black	£31.50
450-044	Yellow	£28.90
450-046	Dark Blue	£29.90
450-047	Green	£29.90
450-048	Red	£28.90
450-051	Orange	£29.90



Laser Engraveable Laminate

This two layer laminate is specially made for laser engraving. Engrave into the coloured layer to reveal white. It is 1.6mm thick and suitable for indoor use. Sheet size 610 x 305mm.

490-346	White/Black	£12.60
490-347	Red/White	£12.60
490-348	Blue/White	£12.60
490-349	Green/White	£12.60

HEGNER German engineered precision...

Safety, reliability, and expert engineering. Designed specifically for educational use, these machines are built to withstand the challenges of high traffic workshops, providing years of dependable performance.



Best Seller!



Hegner Multicut 1 Scrollsaw

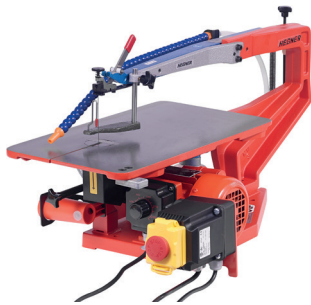
The Hegner Multicut 1 is our entry level scroll saw with a strong practical design and powerful motor. It has an aluminium table which can tilt up to 45° (right hand side), a throat depth of 355mm and is available in variable speed. Our education models are supplied with a hold-down arm and an emergency stop switch assembly

HM-1-EDU	HM-1	£699.00
HM-1V-EDU	HM-1 (Variable Speed)	£890.00

Hegner Multicut 2S Scrollsaw

The Hegner Multicut 2S is our popular mid range scroll saw with an aluminium table which can tilt up to 45° (right hand side) and 12° (left hand side). It has an impressive throat depth of 460mm and Hegner's quick tension release. Available in variable speed and supplied with a hold-down arm and an emergency stop switch assembly

HM-2S-EDU	HM-2S	£985.00
HM-2SV-EDU	HM-2S (Variable Speed)	£1,195.00



Hegner Multicut Quick Scrollsaw

The Hegner Multicut Quick is a heavy duty (variable speed) scroll saw with a cast iron table which can tilt up to 45° (right hand side) and 12° (left hand side). It has a larger throat depth of 560mm and Hegner's quick tension release. The Quick is fitted with a reliable 100 watt continuously rated motor making it suited to requirements for extra capacity and accuracy for large workpieces. Supplied with hold-down arm and emergency stop switch assembly.

HM-QK-EDU		£1,575.00
------------------	--	-----------



Hegner Multicut SEV Scrollsaw

The Hegner Multicut SEV has all the features of the Multicut 2SV but is fitted with a 435 x 230mm precision ground cast Iron rectangular table. It also benefits from an adjustable stroke length and the quick tension release. Supplied with a hold-down arm and emergency stop switch assembly.

HM-SEV-EDU		£1,315.00
-------------------	--	-----------

Hegner Maximus Dust Extractor

Extremely quiet dust extractor (62 dB (A)), with enormous suction power (290 mbar vacuum at 60 l / sec.). The ideal companion for a Hegner Multicut setup with dust-free dirt removal through lockable filter bag and suitable for allergy sufferers with the H12.M-Class rated HEPA filter.



HM1016	£364.00
---------------	---------

Hegner HSM300S with Extraction

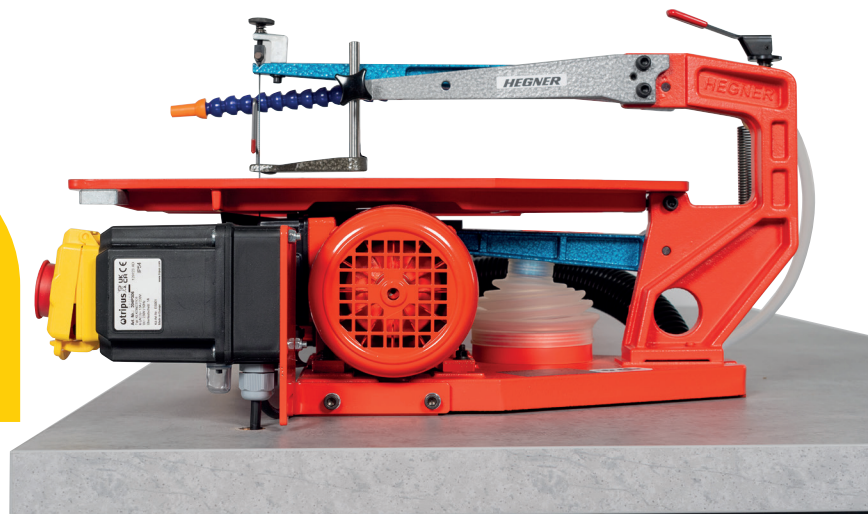
High quality disc sander with a specially manufactured, integrated and interlocked dust extraction unit with an emergency knee switch. The sander itself has a large sanding table and a comprehensive guarding system for added safety. It uses hook and loop backed sanding discs for easy fitting and an adjustable sanding angle between 0-45 degrees.



HSM300S-EDU	£2,695.00
--------------------	-----------

Did you know?
We are the exclusive
supplier of Hegner in
the UK!

Shop the full range...



Hegner Scrollsaws:

THE choice for
education...

Trusted by educators to be used by students of 11 years of age and upwards and the preferred choice of schools across the globe - Hegner's tools are selected for their enhanced safety features, durability, and quality, and importantly, noise management - crucial in an educational setting.

Our Hegner scrollsaw EDU models feature a hold-down arm to keep workpieces secure, paired with a conveniently located emergency stop switch for rapid, reliable safety measures.

1. The variable speed models and footswitch gives you complete control over your work, making the user experience much easier than with many other saws, and significantly reducing the risk of mistakes.
2. The machine's design is perfect for saving space and optimising room in your workshop and its ergonomic features offer users a pleasant and enjoyable scrollsaw experience.
3. Purchasing a Hegner is an investment. Hegner scrollsaws have been designed to last, giving you the confidence you need to be sure that your equipment will not let you down.

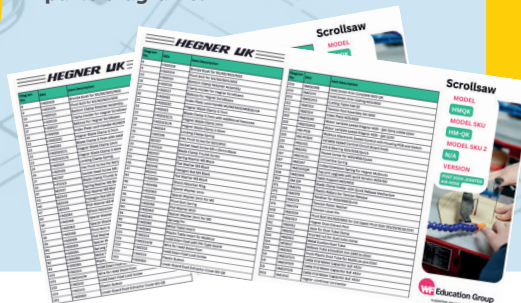
Need help choosing the
right scrollsaw?

Scan to access our comprehensive Hegner Buying Guide to help you select the right scrollsaw for your needs.



Need spare or replacement
scrollsaw parts?

Maintenance of your machinery is simple with our extensive range of spare and replacement parts. Scan to access the parts diagrams.



Equip your workshop with materials
for every project!

Scan the code or head to pages 8-9
to browse our materials range!



HEGNER

Hegner machinery is ideal for integrating with an Akira™ mobile bench setup, ensuring easy installation and complete integration with under bench extraction systems.

Deliver a modern D&T curriculum with future-proof spaces...

Make it
mobile with

akira™

By **WF** Education Group



Akira™ Sanding & Fine Cutting WorkStation (Option 2)

With one Hegner disc sander, one Hegner Multicut scrollsaw, one underbench extraction unit and Grattells storage.

AKWBM01C06

This setup can be used for precise woodcutting tasks, and the disc sander for smoothing and shaping wooden components.



- ✓ Easy to relocate; adapting to different classroom layouts or subject requirements.
- ✓ Pre-installed and designed for D&T curriculum needs with safety features like stop switches.

- ✓ Combines storage, extraction, and fabrication tools - in one mobile unit!
- ✓ 25-year warranty on frames and modular, replaceable components for long-term use.

- ✓ Creates dynamic, practical teaching zones in limited or shared spaces.
- ✓ Preassembled, ready to wheel in to place, ready-to-use!

Explore our full range of mobile machinery WorkBenches online!



Akira™ Fine Cutting & Drilling WorkStation

With one Hegner Multicut Scrollsaw, one Hegner dust extractor, one Meddings Compact Bench drill and Grattells storage.

AKWBM06C06



Akira™ Fine Cutting WorkStation

With two Hegner Multicut Scrollsaws, two Hegner dust extractors and Grattells storage.

AKWBM01C06



Akira™ Sanding & Fine Cutting WorkStation (Option 1)

Supplied with one RJH Bandfacer, one Hegner Multicut Scrollsaw and underbench dust extraction unit.

AKWBM04C06



If you need help choosing a Hegner saw or Hegner machinery bench, or would just like some advice, contact our friendly team today!

Discover our handy Hegner resources...

Mastering safety with Hegner tools

- Do you have sufficient guarding on your scrollsaw?
- Are you ensuring students have essential PPE?
- Is there adequate extraction in your workshop?

Safety is crucial when using scrollsaws in an educational setting, and we have created a quick guide to ensure your students are well protected.

Essential guarding and PPE, dust extraction and emergency shut-off procedures, are amongst our safety musts this guide covers.

Download your copy of the Hegner Scrollsaw Health and Safety Guide!

Scrollsaws - your questions answered...

- What is the difference between the different blade clamps?
- Why does your tension keep coming loose?
- Where can you get replacement parts for your machine?

These and more questions are answered in our comprehensive guide.

Using Hegner scrollsaws in your D&T workshop can raise some common questions. That is why we've compiled an FAQ guide to help you troubleshoot and get the most out of your machine.

**Hegner Scrollsaw FAQs
Download your copy of the guide!**



1. Do you have sufficient guarding?

Hegner provides two types of guarding to protect children from the saw blade - a 100% open safety guard or a plastic enclosure. Make sure your school has at least one of your teaching spaces set up for teaching and using the

2. Are your students wearing essential PPE?

A safety and cost-effective solution is provided with goggles and it is always for students to make sure you always help to ensure students to

3. Is your dust extraction adequate?

Special care is advised that certain tools which generate dust should be used in a well-ventilated area or under bench extraction as



Scrollsaw Health & Safety Musts



1. Can I convert my single speed machine into a variable speed machine?

The scroll saw is a very versatile machine. The most common with the conversion of a single speed machine into a variable speed machine is to use a variable speed motor or your own motor. It is important to make sure that the motor is suitable for the machine. You will need to identify the motor and the speed of the motor. It is also important to make sure that the motor is suitable for the machine. You will need to identify the motor and the speed of the motor. It is also important to make sure that the motor is suitable for the machine.

2. My saw will not cut

If your saw does not cut it is important to check the blade. The blade may be dull or the blade may be the wrong type. You will need to identify the blade and the speed of the blade. It is also important to make sure that the blade is suitable for the machine. You will need to identify the blade and the speed of the blade. It is also important to make sure that the blade is suitable for the machine.



Scrollsaw FAQ's



Stock up and ensure safer workshops

See pages 24-27 for essential goggles, masks, and more, or view our full range online!





Need help getting funding for NEW machinery?

Making sure you win the bid for quality equipment and machinery is fundamental to future-proofing your workshop, and ensuring students have the right equipment to support their creative minds for many years to come!

If you need new equipment in your workshop or classroom, but need help putting together a strong bid for your senior leadership team - we can help!

We've worked with teachers and senior management in schools to put together a guide to help you make your bid stronger.



Download your Capital Equipment Bidding Guide today!

Sedgwick TA315 Table Saw

Top quality precision saw with solid cast iron table, providing maximum timber support. Aluminium rip fence allows for two working positions (ripping and angled ripping). A maximum depth of cut of 105mm at 90 degrees and 76mm at 45 degrees. Thermal overload, no-volt release switch, emergency foot switch and keyswitch fitted as standard.

530-343 £4,295.00



RJH Deer Bench Mounted Bandfacer

Bench mounted bandfacer is ideal for the many sanding and finishing processes carried out in schools. The standard tilting table is 226 x 278mm and indexed 135-90°. The bench machine has dust extraction takeoff points and requires a non-latching footswitch (530-795).

530-525 £2,324.00



Meddings Compact Drill

A high specification, UK made bench drill with easy to use front mounted controls. It has five operating speeds and a head raising mechanism to adjust the working height.

540-020F £2,250.00



BS440 Education Bandsaw

A high quality bandsaw ideal for educational workshops which delivers consistently accurate results with its ceramic guide system which is fully guarded. It has a self releasing kick stop, blade tension indicator and key locked doors and isolator.

540-672 £3,250.00



Looking for machinery?

Check out our **Machinery Procurement Checklist**, to help you ensure the right equipment is selected, procured, and installed properly to support teaching, learning, and practical projects effectively.



CR Clarke 725FLB Vacuum Former

This desktop machine is a perfect mid-range vacuum former, ideal for schools, with its good sized forming aperture and interlocked guard. The digital timer with alarm helps to efficiently monitor the cycle for optimum outputs.

490-152 £3,395.00



CR Clarke Model 600 Strip Heater

600mm strip heater with single or double sided heating, able to handle the most common thermoplastics. The heating wires produce an accurate line of heat to make consistent bends for fabrication.

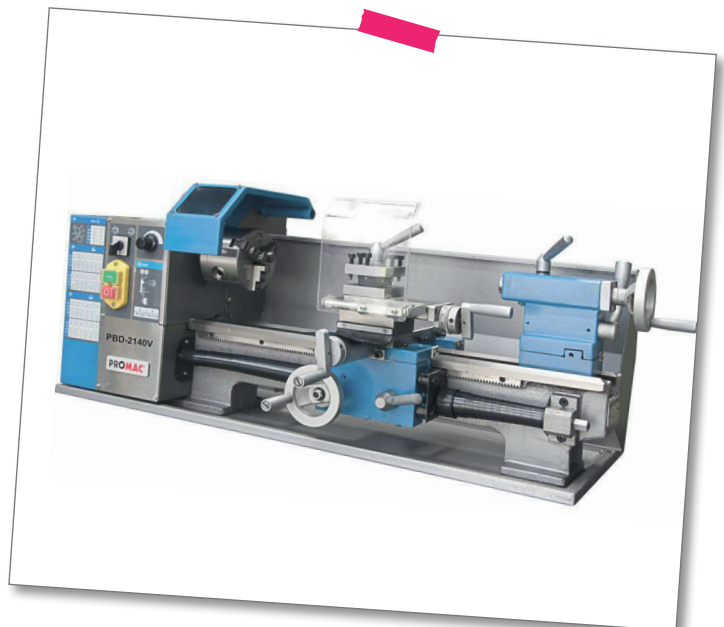
490-101	600S	£659.00
490-104	600D	£1,077.00



RJH Gerbil 2010 Vacuum Form Cutter

The popular Gerbil model 2010 vacuum form trimmer has a height adjustable Tungsten Carbide Disc which will trim around mouldings at a pre-determined height above the table.

530-359 £804.00



Promac PBD-2140V Benchtop Metal Lathe

High quality benchtop engineering lathe with a cast iron frame for vibration-free machining, electronic variable speed control and emergency stop switch.

540-665 £2,150.00



Eclipse Coping Saw

Steel frame lacquered wooden handle 41/2inch throat. Eclipse 70CP1.

600-133 £8.75 Each



Eclipse Coping Saw Blades

Quality heat treated steel with accurately set and shaped teeth.

Supplied in standard 165mm size to fit most coping saws. 14TPI and 24TPI, pinned ends.

Pack of 10.

500-094 14tpi £3.95 Pack of 10
500-095 24tpi £4.50 Pack of 10



Draper Venom Tenon Saw 250mm

Manufactured from high quality 1mm carbon steel, that's been correctly hardened and tempered to ensure the blades strength and straightness while the double ground set of the saw tooth delivers a faster saw cutting performance with optimal sawdust removal in both forward & reverse motions

500-226 £6.25 Each



Eclipse Premium Hacksaw 20T

Spear & Jackson diecast handle and oval tubular frame. Wing nut tensioning device for 10-12inch blades.

600-135 £13.75 Each



Eclipse Bi-Metal HSS Hacksaw Blades 24tpi 300mm

A virtually unbreakable blade ideal for all material types, including sheet metals and hard steels. These blades are particularly useful when working in restricted access areas due to their thinness and flexibility, or on site where the workpiece cannot easily be secured.

500-109 £129.95 Pack of 100

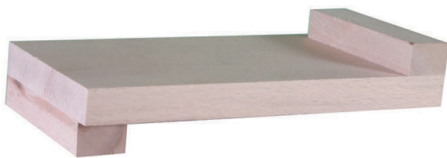


Footprint Try Square 150mm Walnut Handle

An essential tool for all woodworkers made in Sheffield. This Footprint Square is made from Walnut.

Traditionally used for marking right angles and checking squareness between joints. The hardened steel blade has been chemically blued to prevent corrosion and provide a longer working life.

720-010 £12.95 Each



Bench Hook 250 x 125mm

All beech manufacture, glued with dowells.

Size 8" x 4".

For use either right or left handed.

950-514 £11.95 Each



Faithfull Digital Caliper

Manufactured from hardened stainless steel, this three function electronic digital caliper provides precision readings through a clear liquid crystal display. Its many features include a fine adjustment roller which allows precise measurements to be taken quickly and easily.

The digital section button enables readings to be displayed in either metric, imperial (decimal) or imperial (fractional) format. The four-way measurement function provides a choice of readings in external, internal, depth and step modes.

720-151 £36.95 Each



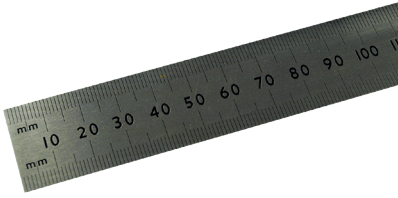
D&T Tools & Consumables Checklist

Download our FREE Checklist - designed to save you time!

Mark what you need, add quantities, and we'll handle the rest.

Efficient, easy, and hassle-free!

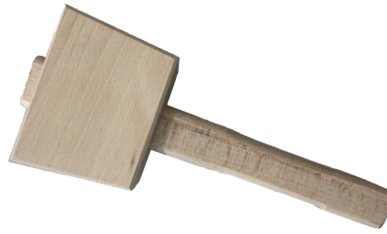




Steel Rule 300mm

This is our best seller and offers outstanding value. They are graduated on two edges in mm and figured every 10mm.

550-108 £2.95 Each



Footprint Beech Mallet 100mm

The Footprint carpenter's mallet is made out of specially selected beechwood. It is ideal for use with wood chisels.

400-256 £7.50 Each



Eclipse Bevel Edge Wood Chisel Set (6/13/18/25mm)

Wood chisel set ideal for schools and educational establishments.

- Heat treated blades for maximised safety and strength
- Soft feel ergonomic handle
- Chrome vanadium steel
- Built in striking cap

500-225 £17.80 Each



Quick Change Bar Clamp

- Tough nylon jaws
- Quick-release button
- Single-handed operation

210-137 150mm £6.30
210-138 300mm £7.60 Each



Draper Engineers File 200mm Set of 3

High carbon steel, hardened and tempered with soft grip handles incorporating hang hole.

350-187 £13.95 Set of 3



Aluminium Sash Clamp 600mm

- Extruded aluminium with cast head & foot
- Spring-loaded rapid adjustment mechanism
- Jaw width 40mm

210-300 £12.10 Each



Footprint Beech Try Square 150mm

Used to mark and check right angles on wood and between joints.

- Made in Sheffield, Britain
- Hardened steel blade has been chemically blued to prevent corrosion
- Beechwood stock fitted to the blade by three brass rivets
- The face of the stock is fitted with a brass plate. This maintains squareness and prolongs the life of the square.

720-112 £9.80



Stanley Chisel Set of 4

Set of 4 chisels 6mm, 12mm, 18mm, & 25mm. Type. Bevel Edge.

190-119 £29.95



Browse our full range of tools online



Draper Coping Saw

Lacquered wooden handle, 4½inch throat.

600-131 £7.70 Each



Crown Pin Hammer 100g/3.5oz

Cross pein pin hammer with long ash shaft forged steel head and polished face. 100g/3.5oz.

400-151 £9.80 Each



Retractable Craft Knife

General purpose retractable craft knife.

190-303 £2.80 Each



18V Combi Drill

- The power and speed to drill into wood, metal and for all screwdriving tasks
- Hammer action for drilling into masonry and concrete
- 2 Gears with variable speed
- 11 position clutch provides precise control for drilling into wood, metal, plastic and all screwdriving tasks.
- Lithium Ion battery holds over 80% of its charger over 90 days whilst idle. No Need to charge unit before each use.
- Spring loaded battery system for quick and simple battery change and a more secure fit

500-223 £75.00



Bostik Standard Glue Gun Value Pack

The Bostik DIY Hot Melt Glue Gun is a sturdy glue gun, ideal for education. Uses 150mm standard glue sticks.

- Easy to use trigger action glue gun
- Retractable stand holds gun upright when not in use
- Constant thermostatic control
- 1.8m long cable
- 85 watts, 240 volts
- Safety warning light
- Conforms to BS3456
- CE approved
- Uses standard 150mm gluesticks

530-222 £84.40 Pack of 6



Bosch PK18E Trigger Feed Glue Gun

Features a nozzle with heat protection jacket & anti-drip guard. electronically operated heating elements & an adhesive pre-heating facility for fast warm-up. Accepts 200m long glue sticks.

530-183 £24.50

An easy way to keep track, stock up and order essentials!

To save you time and simplify the process of managing your D&T workshop resources we have designed a downloadable **Tools and Consumables Checklist**. Why use it?

Easy to navigate

Indicates suitability of materials like wood, metal, or plastic, ensuring no confusion.

Save time and effort

You can take a grab-and-go checklist with you while walking around the workshop, checking what needs restocking.

All-in-one resource

Lists all essential tools, machine consumables, and materials, categorised for woodworking, metalworking, and plastics.

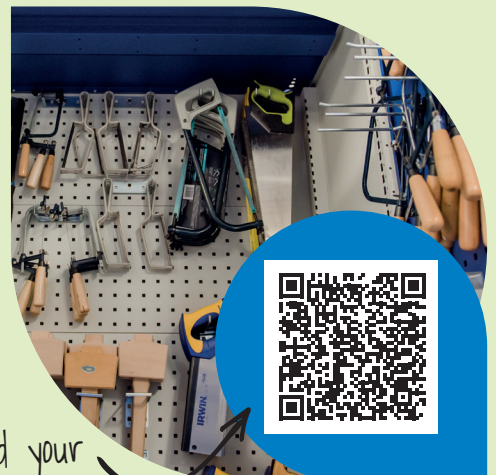
How it works?

Download the Checklist - available in both Excel and PDF formats, you can print it out or complete it digitally.

Mark what you need - walk around your workshop, tick off the tools, consumables, and materials you need, and input the required quantities.

Submit for processing - pass the completed checklist to your finance department or email it directly to our Customer Support team at customer.support@wf-education.com.

We'll handle the rest, providing you with a quote or finalising your order.

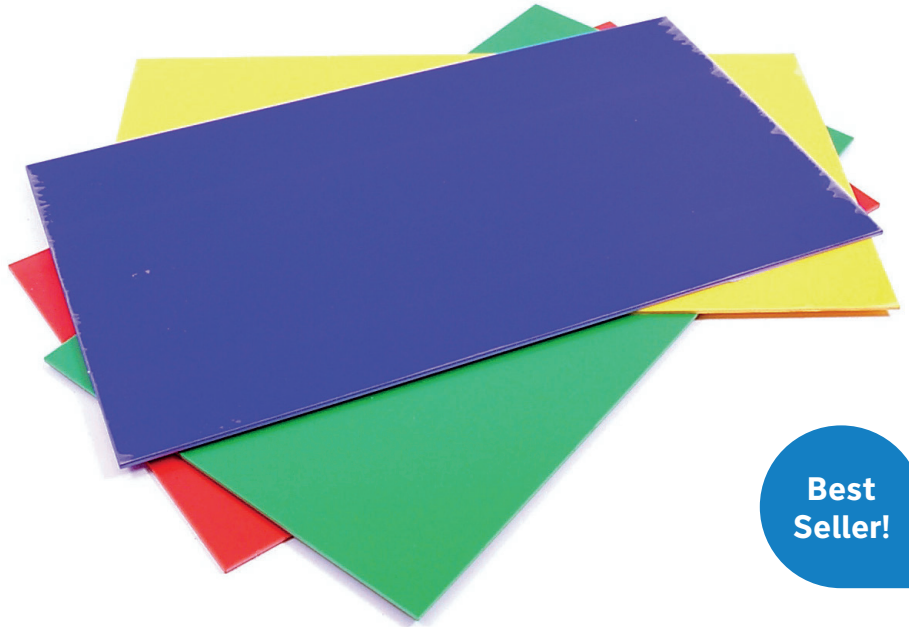


Download your copy!

High Impact Polystyrene (HIPS) Assorted

Vacuum forming sheets in a range of sheet sizes to suit various vacuum forming machines. Being easy to form makes them ideal for educational use. Contains red, blue, yellow and green.

485-160	457 x 254 x 1mm	£139.00	Pack of 108
485-165	457 x 254 x 1.5mm	£132.00	Pack of 72
485-170	457 x 254 x 2mm	£138.00	Pack of 54
485-175	457 x 305 x 1mm	£120.00	Pack of 96
485-180	457 x 305 x 1.5mm	£120.00	Pack of 64
485-185	457 x 305 x 2mm	£126.00	Pack of 48



Best Seller!

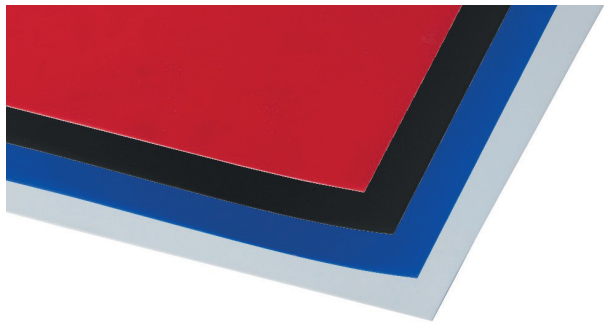


ABS Sheet Pinseal Black 1372 x 660 x 1mm

Easy to cut, drill, saw & paint, even with cellulose paints, can be vacuum formed & joined with plastic cement (Tensol No.12).

Finish is Pinseal.
Sheet size : 1372 x 660 x 1mm

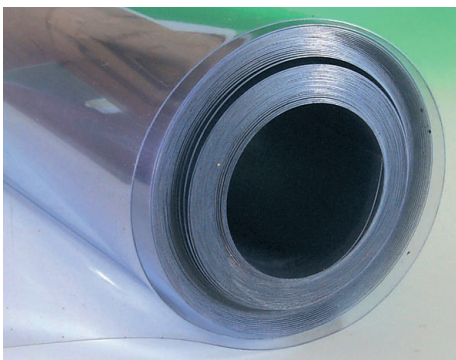
490-690	£12.95	Each
----------------	--------	------



Polypropylene Sheet Opaque

An extremely tough plastic for durable folders, binders, boxes and dispensers. Score before bending to produce a plastic hinge that can be folded many of times.

490-757	Red	£12.00	Each
490-758	Blue	£12.00	Each
490-759	White	£7.99	Each
490-761	Black	£7.99	Each



Clear PVC film

Vacuum forms easily, ideal for blister packing etc. This material is food grade.

Please note: Due to the manufacturing of this product, the weight will be between 8-10kg. Length: between 44 and 52 metres

490-265	545 x 0.5mm (8-10kg)	£99.00	Per roll
490-267	545 x 0.25mm (8-10kg)	£99.00	Per roll

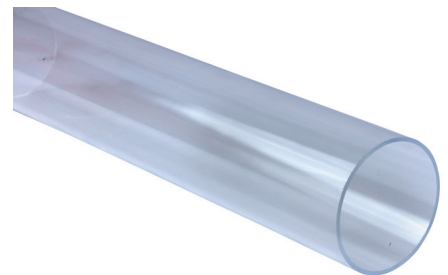


Acrylic Light Gathering Rods Assorted

Colours are light-gathering and fluoresce, this is where light is collected and transmitted to the ends of the rods giving a bright light effect even in daylight.

Rod length 500mm nominal.

490-198	Small Dia.	£51.00	Pack of 24
490-199	Large Dia.	£100.40	Pack of 20



Acrylic Tube Extruded Clear Assorted

Assorted diameters in a length of 500mm.

490-308	£40.00	Pack of 9
----------------	--------	-----------

Bridging the industry / education gap with robotics + coding

The integration of robotics and coding into education is not only associated with an ever-evolving shift in worldwide curricular, but are an excellent opportunity to prepare students for a technology and innovation driven future.

Due to rapid change, 80% of the jobs in 2030 are largely unidentified (Norman, D.A (2016).

21st Century skills such as problem solving, and collaboration explored through coding and digital literacy are essential work readiness skills for students to develop.

Teaching students to build robots, write code, and apply their knowledge to solve real world problems not only helps them to grasp abstract concepts but will facilitate critical thinking and application.

Without mobile furniture could you rethink or relocate a space for robotics? The Akira™ robotics bench and bumper system offers schools and colleges the opportunity to create an adaptable environment, where students can embrace multiple activities including robotics, coding, testing, and competing – adapting quickly to each activity.

60% of schools surveyed reported offering at least one robotics or coding programme.

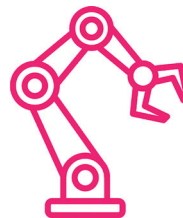
ISTE 2021

akira™

By **WF** Education Group



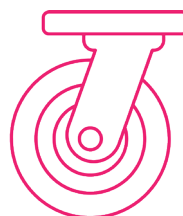
Provide multiple opportunities to practice soft skills.



Bridge theory and practice with hands-on experiences.



Improve awareness and aspirations for STEAM-related careers.



Code and compete, anywhere! Set up in less than five minutes.



Want to **WIN** an Akira™ benching system?

We know that the best ideas come from those who work in the industry and are in schools every day, that's why we want to hear from you!

Complete our short survey to be in with a chance to win:

2 x storage WorkBenches, 1 x Akira™ Elite WorkBench and a robotics bumper kit (worth over £4,000!).

Good luck and thank you!

Enter to Win



VISION

WITH ACTION CAN CHANGE THE WORLD.



Set up robotics quickly and easily...

Benefits include...

QUICK + easy set up

Fix into position in minutes, remove in seconds.

Run robotics activities in ANY room

Mobile Akira™ benches allow you to run robotics activities easily in any classroom.

Get your new robotics space - FAST!

Our unrivalled installation times, mean you can have your arenas up and running in a matter of weeks!

akira™

By **WF** Education Group

Shop our most popular configurations...

Robotics Arena Full Storage Size 3

A complete, mobile arena system with removable bumpers and full under-bench storage – ideal for storing part-built robots, as well as bumpers when not in use.

Dimensions

3000 mm x 1500 mm x 850 mm (L x w x h).

Code: **AKRAFS3C05VO**



Search all colour combinations and configurations online...



Robotics Arena Lite Size 2

A lightweight, highly mobile arena system with two Akira™ WorkBench Light benches and removable bumpers.

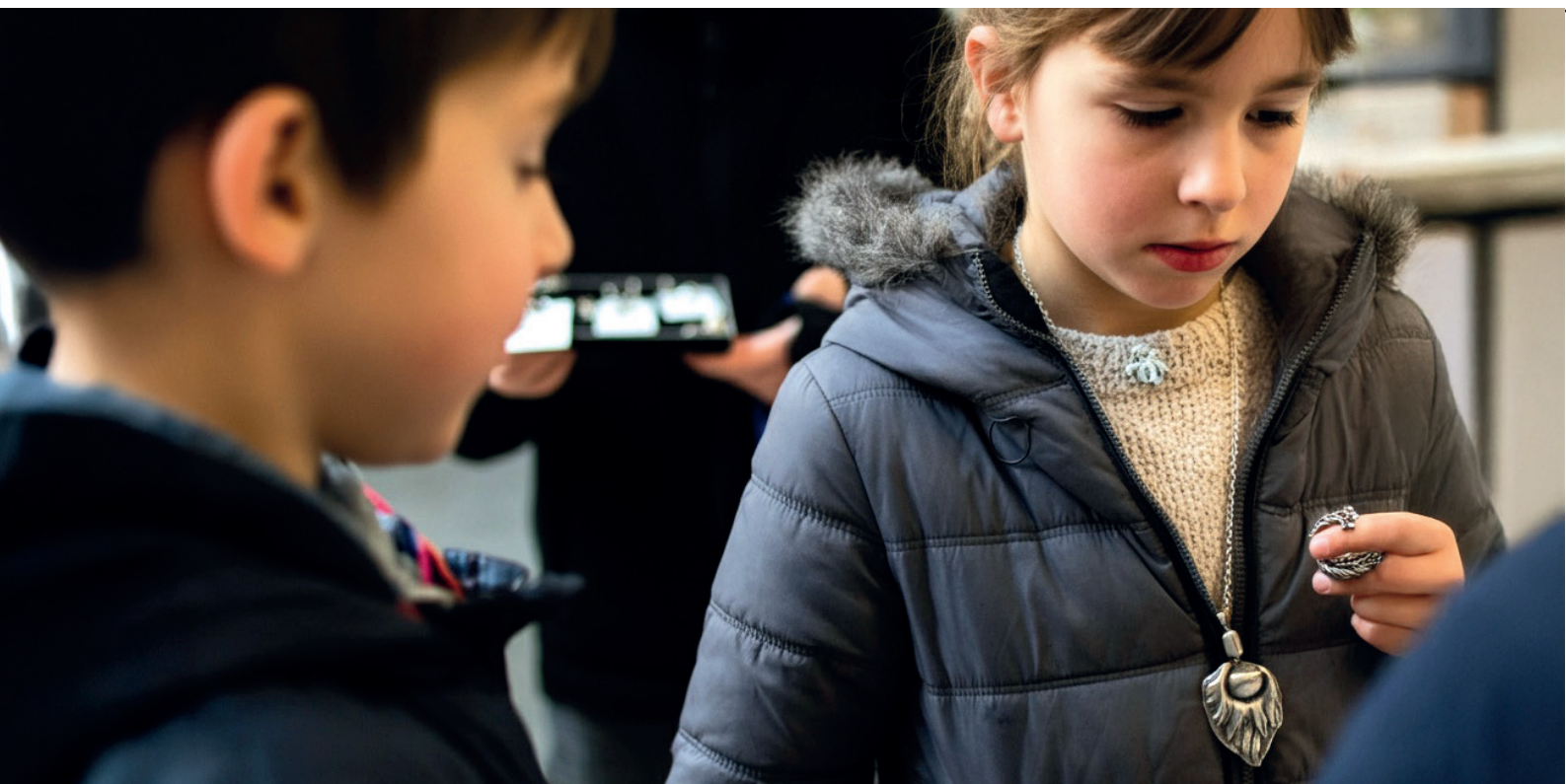
Dimensions

3000 mm x 1500 mm x 850 mm (L x w x h).

Code: **AKRALT2CG**

Want to configure your own arena?
Learn more online...



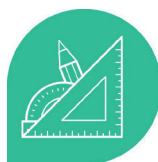
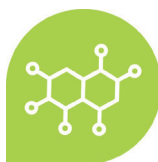
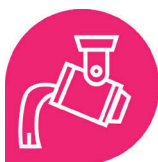


Pewter | An interdisciplinary opportunity?

A non-toxic, reliable workshop staple, safe and malleable, and perfect for hands on experience of casting, moulding and finishing. But how far could pewter take your students?

In this blog, we'll explore ways schools can incorporate pewter into cross-curricular projects, creating interdisciplinary learning opportunities that engage students in both practical and creative activities.

What's covered...



- **History and Cultural Studies:** A Deep Dive into Metalworking Traditions
- **Art and Design:** Hands-On Craftsmanship and Creativity
- **Science and Chemistry:** Understanding Metallurgy and Material Properties
- **Mathematics:** Applying Geometry and Proportions in Metalworking
- **Entrepreneurship:** Turning Pewter Work into a Business Opportunity
- **Environmental Science:** Exploring Sustainability and Material Innovation



Read the blog



Lead Free Pewter Stick

An ideal material to demonstrate casting techniques and processes to make highly detailed items such as jewellery, tankards, coasters, place mats, trays etc. Being non-toxic and totally re-useable it is an ideal material for schools.

Available in single 1kg sticks or a money-saving pack of 3.

120-116
120-167

Single Stick
Pack of 3

£41.00
£118.00



Antex Soldering Iron CS 18W 230V Silicone Cable with Plug

The Antex CS18 soldering iron is ideal for miniature precision soldering.

700-238 £24.20 Each



Antex Soldering Iron XS 25W 230V Silicone Cable with Plug

The Antex XS25 soldering iron is ideal for all general soldering applications.

700-239 £24.20 Each



Antex SK9 Soldering Iron Kit Silicone Cable with Plug

Soldering Iron Kit containing a 25 watt XS size soldering iron with a burn proof silicon carbide lead fitted plug an ST6 soldering iron stand and a length of solder. For 220/240 volt operation only.

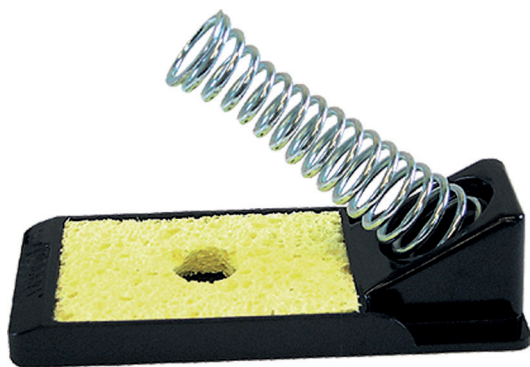
700-248 £34.95 Each



Lead Free Solder 18swg 250g

A lead free fast flow solder, with good solderability and minimal clear residue.

700-102 £55.10 Each



Soldering Iron Stands

For all Antex and most other brands of soldering iron. This stand is adjustable for the model of iron used. It is made from high grade phenolic, has slip resistant feet, and a ballast weight for stability.

700-148 £7.00 Each



Draper Helping Hand Bracket & Magnifier

Two crocodile clips hold items while eight swivel joints allow a wide range of adjustment. Supplied with a 63mm diameter lens and heavy iron base for stability.

500-165 £8.05 Each



Value Goggles Indirect Vent Anti Mist

A compact, lightweight, cost-effective goggle. The tough polycarbonate lens offers high resistance to impact from flying particles. Complies with EN166 1B34 CE

590-187

£4.60 Each



Junior Safety Goggles

Junior goggle with indirect vent. Soft contoured wide face area for a comfortable fit. Ideal for children.

- Clear polycarbonate lens
- Elasticated headband
- Conforms to EN166 34B

590-091

£3.90 Each



Safety glasses Lucerne Safety Overspecs

The Lucerne spectacle offers an increased coverage of face. It has a clear wrap-around eyeshield and can be worn over regular spectacles.

590-107

£3.95 Each



Safety Glasses Martcare Visispec Eyeshield

Low energy impact for general workshop use. EN166F

590-101

£1.69 Each



Lightweight Safety Spectacles

Single lens wraparound safety spectacles with a comfortable and lightweight design.

590-105

£2.95 Each



Safety Glasses Apline Eyeshield

Low energy impact for general workshop use. Adjustable side arm. Ideal over spectacles.

590-106

£3.25 Each

Eye and Face PPE in D&T, Food Technology and Art
Are you stocked up with the correct protection?

Historically, D&T has adhered to the EN 166 standard for eye protection in schools and colleges. From November 2024, this has been replaced by **EN ISO 16321**.

Make sure you are aware of the changes, CLEAPPS guidance and how it will affect your department.

Read the blog online...





Safety eyeshield Junior Stealth Clear HC lens Eyeshield

Junior Stealth eyeshield with polycarbonate lens and hinged arms. 120mm from hinge to hinge

590-087 £4.40 Each



Safety glasses Stealth 7000 Clear Anti Mist N Rated

Anti mist safety glasses.

590-089 £4.60 Each



Spectacle Storage Unit

Ideal space saving storage unit for safety spectacles and goggles. Each storage unit holds either 24 goggles or 24 safety spectacles.

590-118 £27.30 Each

Spectacles not included.



Eyewash Splash Station

Sterile isotonic borate solution specially formulated for skin and eyes. Recommended by HSE. Can be safely used in all instances where eyewash is necessary. Neutralises both acid and alkalis.

590-148 £18.90 Each



Face Shield EN1663B Compliant

Face shield with grey browguard and wheel ratchet adjustment. Rated to withstand medium impact EN1663B and conform to EN166.1.B.3.9

590-092 £15.30 Each



Automatic Welding Mask

This electronic welding headshield utilises powerful TRUE COLOUR HD LCD lens technology for enhanced detail and weld clarity, plus adjustable SHADE settings for versatility in a range of welding, plasma and grinding applications.

540-043 £76.60 Each

Can't see a product you want?
Browse the full range online...

TOP TIPS For disinfectant to work when cleaning eyewear, it needs to be in contact with the surface for the time specified on the product, typically between 10 and 20 minutes. This requirement can often be overlooked, and equipment is not left for long enough to be thoroughly disinfected.





Heavy Duty Navy Drill Apron

Traditional workshop apron in heavy navy drill without a pocket. This apron is not hemmed as it has a selvedge.

100% cotton
Size: 35" x 24"

590-392 £3.15 Each



Colourfast Cotton Apron

Strong colour-fast cotton apron stitched halter neck strap.

100% cotton
Size: 35" x 24"

590-396	Royal Blue	£3.15	Each
590-393	Red	£3.15	Each
590-395	Green	£3.15	Each
590-394	Yellow	£3.15	Each



Junior Apron

Junior apron in red colour-fast cotton. Size: 26 x 18inch.

590-390 £3.20 Each



Unbleached Cotton Drill Apron

Traditional carpenters apron with pocket, halter neck in heavy unbleached 100% cotton.

590-391 £3.15 Each



PU Coated Apron Navy & White Stripe

Made from dyed Nylon (polyester woven twin stripe), coated one side with Polyurethane and shower proofed on face. More commonly known as PVC coated PU Nylon. Wipe clean.

590-163 £10.50 Each



Navy Warehouse Coat Size 42 Inch

Navy polyester cotton warehouse coat. UK manufactured. 3 Patch pockets (1 on chest, 2 either side).

590-19942 £21.00 Each



Comfort disposable dust masks Pack of 50

A comfortable fit disposable dust mask.

Pack of 50 masks. (These don't offer rated protection).

590-172 £12.95 Pack of 50



Dust Mask FFP2

FFP1 dust masks protect against moderate levels of dust as well as solid and liquid aerosols, ideal for sanding.

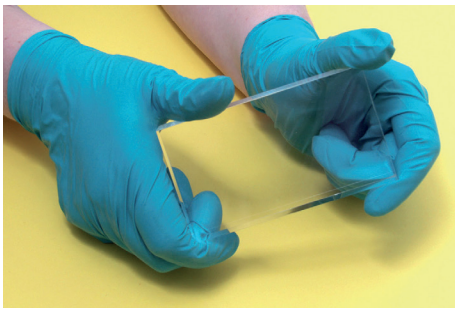
590-285 £28.80 Pack of 20



Dust Mask FFP3

FFP3 dust masks protect against higher levels of dust. Suitable for handling hazardous powders, such as those found in the pharmaceutical industry.

590-299 £22.00 Pack of 5



Disposable Nitrile Gloves Size 8.5-9

Touch 'n' Tuff chemical resistant gloves. Will withstand snags and tears more than vinyl or latex. Large 8.5 - 9.

590-168 £14.70 Pack of 100



Disposable Vinyl Gloves Powder Free Medium

Powder free vinyl disposable gloves which are latex free and fit either hand. Supplied in a pack of 100 gloves.

590-236 £8.30 Pack of 100



Riggers Gloves

Rigger gloves - leather palm canvas back & wrist.

590-177 £3.20 Pair



Sonis 1 - SNR 27

Green - Low Attenuation
Small Cup 80-107 dB

- Moderate industrial noise
- Workshops
- Printing works
- Landscaping
- Leisure activities

590-031 £20.50 Each



Catch up on the latest eyewear guidance from CLEARSS.

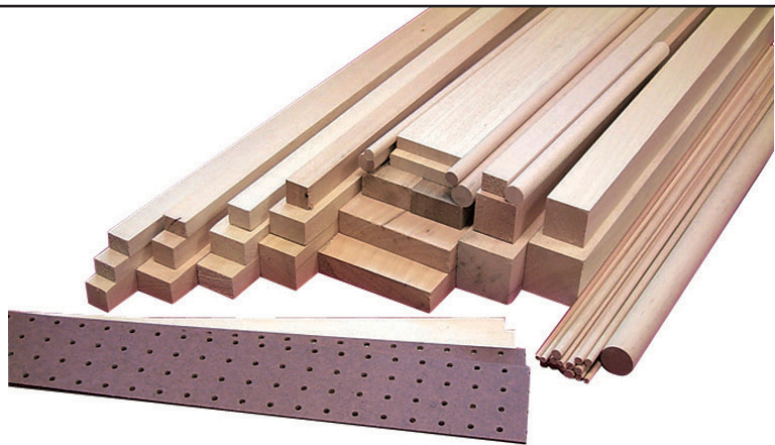




Hardwood Dowel

Quality hardwood dowel, great for general fabrication and model making. Supplied in 600mm lengths and a number of diameters.

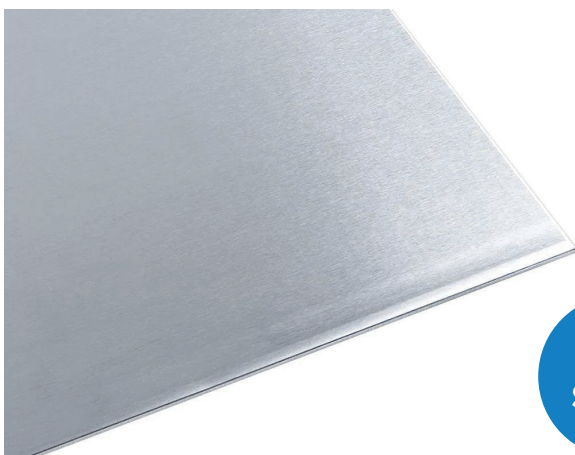
950-693	600 x 6mm	£1.20	Pack of 10
950-694	600 x 8mm	£1.30	Pack of 10
400-034	600 x 10mm	£2.50	Pack of 10
950-696	600 x 12mm	£4.25	Pack of 10



Hardwood Packs

Various stripwood, square and round sections, mainly jelutong, all great for general model making.

950-700	Standard Hardwood Pack	£40.90
950-701	Hardwood Block Pack	£40.90
950-702	Structures Hardwood Pack	£40.90



Best Seller!

Aluminium Sheet

High quality aluminium sheet in various thicknesses, great for metalwork fabrication. Available in 1000 x 500mm or 500 x 500mm sheets.

490-777	1000 x 500 18swg (1.2mm)	£18.99	Each
490-776	1000 x 500 20swg (0.9mm)	£17.99	Each
490-775	1000 x 500 22swg (0.7mm)	£11.99	Each
490-840	500 x 500 22swg (0.7mm)	£6.50	Each



Copper Sheet

High quality copper sheet in various thicknesses, great for metalwork fabrication. Available in 1000 x 500mm or 500 x 500mm sheets.

490-833	500 x 1000 20swg (0.9mm)	£95.00
490-830	500 x 500 22swg (0.7mm)	£38.00
490-831	500 x 1000 x 22swg (0.7mm)	£78.00
490-832	500 x 500 20swg (0.9mm)	£48.00



Mild Steel Sheet 1000 x 550 x 1mm

Mild steel sheet in 1000 x 500 x 1mm.

130-097	£10.99
----------------	--------

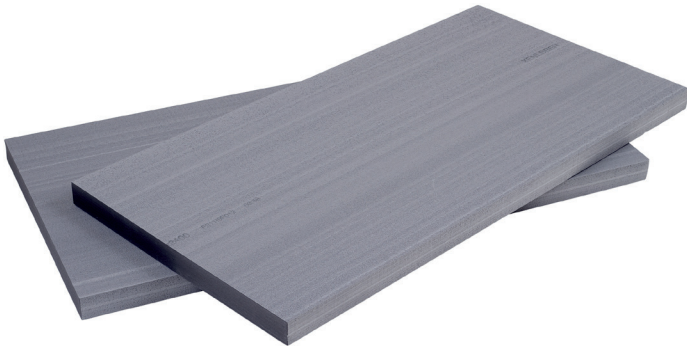
DID YOU KNOW?

Hardwood is unique in its wide variety of grain patterns and colors, which makes each piece visually distinct. Because of its durability, hardwood often has a lower environmental impact over its lifecycle when sustainably sourced, as products made from hardwood can last for decades, reducing the need for frequent replacements.



Browse 'wood' online



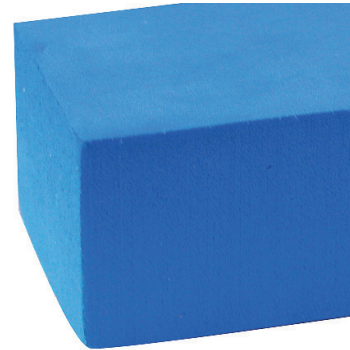


Ravatherm XPS

Ravatherm XPS block is fine grain and can be sawn, carved and sanded to shape. It can be glued together using a water based contact adhesive.

1200 x 600mm in 50 & 75mm thicknesses.

490-231	1200 x 600 x 50mm	£27.95	Pack of 2
490-229	1200 x 600 x 100mm	£54.60	Pack of 2
490-230	1200 x 600 x 75mm	£45.00	Pack of 2
490-006	1200 x 600mm (50 & 75mm)	£50.00	Pack of 3
490-232	1200 x 600mm (50 & 75mm)	£35.00	Pack of 2



Polyethylene Foam Blue

Polyethylene sheet is an equivalent material to Plastazote sheet having similar properties and applications. It has the added advantage of being available in thicker sheet sizes without having to be laminated.

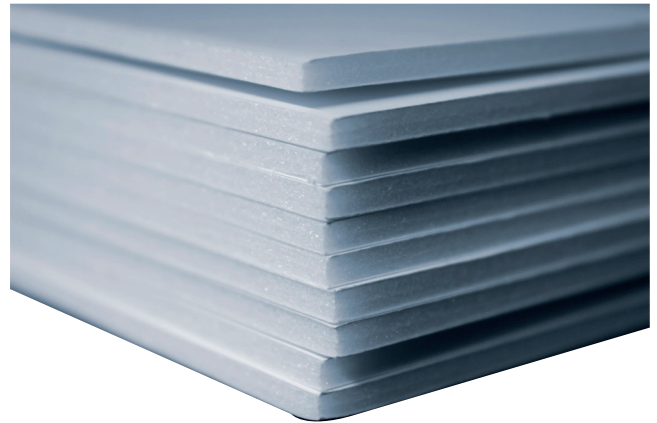
490-662B	1000 x 660 x 50mm	£99.10
-----------------	-------------------	--------



PVC Foam Sheet Assorted

PVC foam sheet can be sawn, drilled, milled, painted, printed, welded, thermo formed (especially line bent), screwed, riveted and glued with both solvent and contact adhesives. It is ideal for CNC machining. Please note, sheet sizes are nominal. Contains white, red, green, blue, yellow and black.

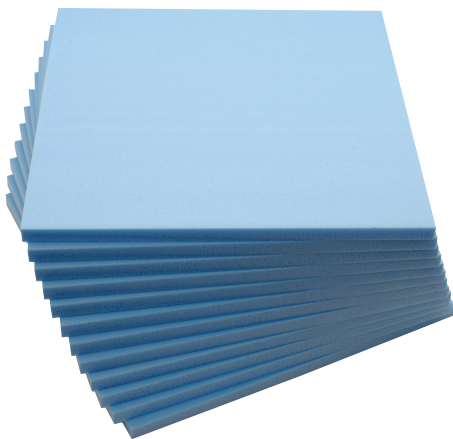
490-388	1220 x 610 x 3mm	£82.00	Pack of 10
490-374	1220 x 610 x 5mm	£82.00	Pack of 5



Foamboard White

Foamboard is an expanded polyurethane core sandwiched between outer layers of paper. It can be glued, folded, bent, interlocked and joined in many ways. The surfaces can be painted and coloured with a wide variety of media.

490-911	A3 sheets / 5mm	£11.95	Pack of 10
490-912	A2 sheets / 5mm	£39.95	Pack of 20
490-913	A1 sheets / 5mm	£32.95	Pack of 10



Craftfoam Grey

Craft foam is light, strong and moisture resistant. Well suited to model making and prototyping.

490-005	600 x 600 x 150mm.	£28.00
----------------	--------------------	--------

Recycling with our Schred System...

The Schred Recycling System is a fantastic and user-friendly addition to any D&T department. Explore our project ideas for recycling with your students using the Schred system...





PVA Wood Glue

High quality woodworking adhesive and medium made to BS4071. Dilute with water to the desired consistency.

110-218	500ml	£2.92
110-219	5 litre	£18.95



Bostik Tensol No.12 Cement 500ml

Single component cement that produces a clear bond for cast acrylic sheets.

110-120		£24.95
----------------	--	--------



Standard Glue Sticks 12mm x 250mm

General purpose glue sticks which can be easily cut to length.

110-105	Pk198	£48.30
----------------	-------	--------



Masking Tape

Quality general purpose masking tape in different widths.

950-425	19mm x 50m Pk16	£13.75
950-426	25mm x 50m Pk12	£12.95



Glasspaper

General purpose glasspaper in different grades.

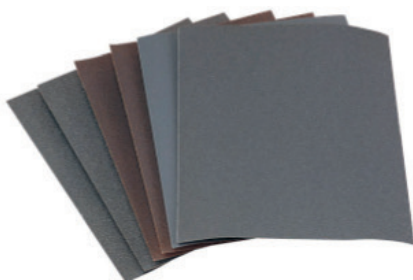
100-100	Grade 00 Pk25	£4.00
100-101	Grade 0 Pk25	£4.10
100-102	Grade 1 Pk25	£4.10



Cork Sanding Block

Cork block to aid hand sanding.

950-169		£2.10
----------------	--	-------



Wet & Dry

Silicone carbide paper sheets in different grades.

100-119	Grit 600 Pk25	£7.75
100-118	Grit 1200 Pk25	£7.75



Sanding Belt

Heavy duty belts for use on wood, plastics and fillers.

100-300	Grit 80 1090 x 150mm	£6.95
100-301	Grit 60 1090 x 150mm	£7.25



Browse
fixing and
finishings
online.



Danish Oil

Easy to use wipe on finish for all types of wood.

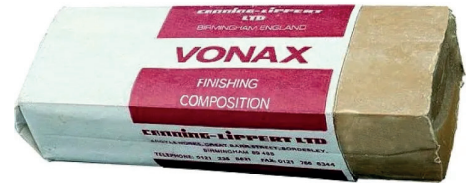
950-898 500ml £16.50



Bri-Wax Clear

Easy to apply and fast drying to give a long lasting satin sheen.

950-268 400g £16.00



Vonax Compound

Polishing compound specifically for plastic such as acrylic.

950-263 800g £6.60



Zinc-Plated Countersink Screws 780 piece

780 assorted countersink woodscrews.

670-010 £12.30



Zinc-plated Hex Nuts

1000 hex nuts in assorted sizes.

670-015 £11.40



Washer Pack

1000 washers in assorted sizes.

670-016 £11.40

Where digital technologies meet manufacturing | Smart nuts and bolts...

Smart nuts and bolts have been around for a while, quietly proving a valuable point; even the simplest tools can be improved upon to solve bigger problems.

By integrating sensors to monitor real-time metrics like torque, vibration, and temperature, these fasteners demonstrate how innovation transforms everyday items into solutions for complex challenges.

For students, it's a great example of how technology works in our favour and can encourage them to see potential in reimagining basic tools.

Even small improvements can have a big impact. What better lesson for the problem-solvers of tomorrow?





A4 Sublimation Starter Set

- A4 Virtuos Printer for Sublimation
- 4 x Sublijet Virtuoso HD Standard Cartridge, Black 42ml, Cyan, Yellow, Magenta 29ml
- Adkins ACL38 38 x 38cm Clam Press
- 1 pack of sublimation paper
- 1 roll of Heat Tape

535-208

£1,075.00



A3 Sublimation Starter Set

- A3 Virtuos Printer for Sublimation
- Adkins ACL50 40 x 50cm Clam Press
- Virtuoso A3 Install Kit HD Standard Cartridges
- True Pix Sublimation Paper A3 - pack of 100 x 2
- 2 x 30m roll of heat tape

535-225

£1,595.00



Sublimation Mug Press Kit

- A4 Virtuos SG400 Printer
- 4 x Sublijet Virtuoso HD Standard Cartridge, Black 42ml, Cyan, Yellow, Magenta 29ml
- Free download of Power Driver software
- 1 pack of sublimation paper
- 36 x Durham Sublimation Mugs
- 1 x 30m roll of heat tape

535-213

£675.00



Sawgrass SG500 A4 Sublimation Printer

A4 sublimation printer and ink package. The SG500 A4 sublimation printer is ideal for modest sized designs and comes with a starter set of inks and paper.

535-430

£395.00



Sawgrass SG1000 A3 Sublimation Printer

A3 sublimation printer and ink package. The SG1000 A3 sublimation printer is ideal for larger sized designs and comes with a starter set of inks.

535-431

£1,125.00

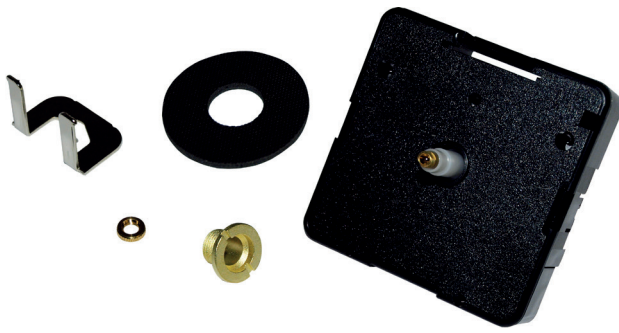


Akira™ Sublimation Printing Workstation

The Sublimation Printing Workstation is a complete mobile solution for sublimation printing, part of the Akira™ system. Comprising of a mobile, heavy-duty workstation system designed and manufactured in the UK by WF Education Group and a complete A4 sublimation kit.

AKWBM52C02CG

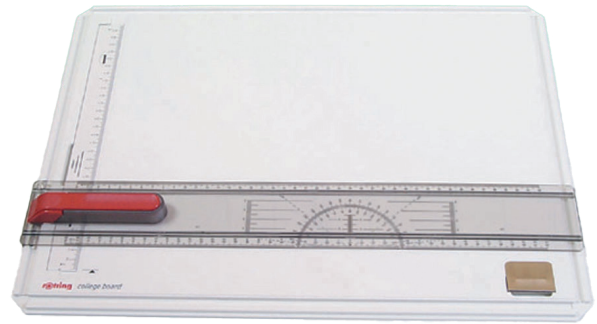
£3,195.00



Clock Movements

Quality clock movements with hands for clock making projects.

950-121	For 8mm face thickness	£1.80	Each
955-110	For 5mm face thickness	£31.50	Pack of 10
955-112	For 10mm face thickness	£31.50	Pack of 10



Rotring College Drawing Board A3

- Spring loaded sheet clamp strips
- Parallel drafting arm marked in mm
- Automatic locking mechanism
- Guide rails on all four sides
- Silicone coated for wear free operation

580-604 £49.00 Each



Box Card A2 White 495 micron Pack of 100

Box Card is ideal for 3D modelling as it scores and bends easily.

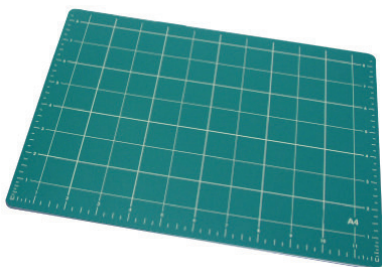
380-511 £65.00 Pack of 100



Presenter File 20 Pockets A3

Quality presentation folders with strong black cover with clear front pocket. Contains 20 internal clear pockets accommodating 40 sheets.

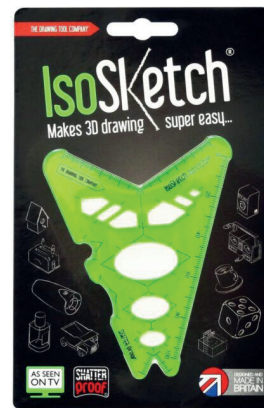
380-963 £2.95 Each



Cutting Mat A3 Green

Laminated PVC with a special surface coating. This ensures that there is no visible trace of cutting and complete penetration of the mat is impossible. They are non-slip and non-reflecting with a 5mm grid pattern on one side. Ideal for all cutting jobs regardless of the type of knife or material.

380-300 £5.25 Each



IsoSketch 3D Drawing Tool

Create perfect 3D sketches in seconds with IsoSketch. The ideal tool for beginners, design students and professionals. IsoSketch combines all the templates and stencils needed to create perfect isometric drawings in seconds. IsoSketch is a 100% British designed, manufactured and distributed product.

580-223 £52.50 Pack of 30



Craftwork Bench (1200x1200mm) - Beech top - 4 x 7inch Woodwork Vices

Beech top with 4 x 7inch woodwork vices.

540-367

£1,695.00



Craftwork Bench (1200x1200mm) - Phenolic Top - 4 x 7inch Woodwork Vices

Phenolic top with 4 x 7inch woodwork vices

540-653

£1,295.00



Craftwork Bench (1200x1200mm) - Beech Top - 4 x 7inch Woodwork Vices - Leg Room Cupboard

Beech top with 4 x 7inch woodwork vices and leg room cupboard

540-366

£2,170.00



Craftwork Bench (1200x1200mm) - Phenolic Top - 4 x 7inch Woodwork Vices - Full Size Cupboard

Phenolic top with 4 x 7inch woodwork vices and full size cupboard

540-656

£1,625.00



Turn the tables! Transform any space into a functional workshop!

Sturdy and dependable... Our classic craftwork benches are designed to handle any workshop activity and provide a sturdy surface to work from. Crafted with robust materials to ensure years of reliable use for the most heavy-duty of tasks.



Craftwork Bench - Hexagonal (1600mm) - Beech Top - 6 x 7inch Woodwork Vices - Full Size Cupboard

Hexagonal shaped beech top with 6 x 7inch woodwork vices and full size cupboard

540-648

£3,795.00



Craftwork Bench - Hexagonal (1600mm) - Beech Top - 6 x 7inch Woodwork Vices

Hexagonal shaped beech top with 6 x 7inch woodwork vices

540-649

£3,295.00



Craftwork Bench (1200x1200mm) - Beech Top - 4 x 7inch Woodwork Vices - Full Size Cupboard

Beech top with 4 x 7inch fitted woodwork vices and full size cupboard.

999-7064

£1,995.00



Craftwork Bench (1200x1200mm) - Beech Top - 4 x 7inch Woodwork Vices with Undershelf

Beech top with 4 x 7inch woodwork vices and undershelf.

540-365

£1,750.00



Craftwork Bench - Height Adjustable (1200x1200mm) - Beech Top - 4 x 7inch Woodwork Vices

Beech top with 4 x 7inch woodwork vices and height adjustable.

999-6286

£2,047.50



All craftwork benches come complete with vices; there's no need to purchase separately!

Looking for standalone vices, browse online!





Heavy Duty Industrial Cupboard with 4 Shelves

Made of heavy gauge welded steel construction with pivoted doors to allow runs of cupboards to be created. The shelves have 100kg capacity and are adjustable. Security ensured with a locking system. The inside of the door panels are perforated allowing you to fit hook kits.

HxWxD: 2000 x 1050 x 650mm. With 4 shelves

950-781 £1,076.80



Heavy Duty Industrial Cupboard with 2 Shelves and 4 Drawers

Made of heavy gauge welded steel construction with pivoted doors to allow runs of cupboards to be created. Adjustable shelves and drawers which glide on roller bearings even when fully loaded (75kg capacity). Security ensured with a locking system. The back of the cupboard is perforated allowing you to fit hook kits.

HxWxD: 2000 x 1050 x 650mm.

Tools & accessories not included. With 2 shelves and 4 drawers

950-780 £1,379.70



Flammables/Hazardous Storage Cupboard

- Flush no-snag handles
- Liquid tight sumps
- Robust steel construction
- Reinforced doors
- Removable sump tray
- Warning symbols supplied
- Powder coated finish
- Supplied with three adjustable shelves
- Dimensions: (HxWxD): 1800 x 900 x 460mm

950-093 £409.40



Tambour Storage Cupboard

- 470mm deep cupboard
- Sliding double tambour doors with full length hand rail
- Fully welded carcass supplied pre-assembled
- High quality, stylish and robust furniture for demanding work environments
- Supplied without shelves

HxWxD: 1970 x 1000 x 470mm

530-002 £829.50



Maintenance Trolley 6 Drawer

- Welded steel construction
- Adjustable, galvanised steel shelf
- Shelf capacity is 60Kg U.D.L
- 50Kg U.D.L capacity, 100% extension drawers
- Drawer blocking to prevent accidental opening
- Lockable with push - pull handle
- Maximum load capacity 200Kg
- Built to last 10 years guarantee

950-789 £1,068.90

Gratnells



MakerSpace Trolley in Silver

The Gratnells MakerSpace trolley can be configured with a variety of tray and storage bin options. The standard Gratnells trays can be interchanged with fixed storage to transport materials and tools to a work area, and the trolley can also be used as a standalone workstation, with ample storage for many materials and hand tools. Gratnells trays have also become the system of choice for many STEM and STEAM kit manufacturers, and again these will fit directly into the MakerSpace trolley.

940-005 £895.00



The D&T department at the Co-op Academy Stoke-on-Trent

Flexible storage and multi-activity spaces



Challenge

Design and Technology spaces require solutions that adapt to diverse teaching activities, mobile equipment, and evolving teaching and learning needs.

Solution

We worked with the team to deliver flexible, reconfigurable spaces that maximise efficiency. By combining durable, adaptable equipment with tools and consumables, we ensure workshops and classrooms meet the demands of modern STEAM education.

Result

The Academy's new D&T spaces now support a wide range of activities, in fabrication, CAD/CAM and more. Flexible layouts and mobile furniture allow educators to easily transition between projects.

Discuss your space with us...

Talk to us for more information, to discuss a project or to request a quick quote!

Read the case study...

Visit: shop.wf-education.com/dnt

customer.support@wf-education.com

01743 812 200



Images from Ferndown Upper School

Everyday benches. Built-to-last.

The Akira™ WorkBench's load-bearing structure is fabricated from heavy-gauge steel, providing unparalleled rigidity and stability - and therefore safety in use. A highly sustainable solution - the steel frame's considerable lifespan, coupled with the replaceable nature of modular components such as panels, work-tops, storage and power units, result in a product solution that will stand the test of time under heavy educational use.



WorkBench Elite

All the benefits of the standard version, plus a power outlet unit with four plug outlets and two USB smart charging ports that charge according to the requirements of the device. Also includes a lockable under-bench storage unit for equipment.



- Onyx Grey Panels / Concrete Grey Worktop
- Kiwi Green Panels / Concrete Grey Worktop
- Smoke Blue Panels / Concrete Grey Worktop
- Onyx Grey Panels / Vicenza Oak Worktop
- Kiwi Green Panels / Vicenza Oak Worktop
- Smoke Blue Panels / Vicenza Oak Worktop

- AKWBEC06CG**
- AKWBEC05CG**
- AKWBEC02CG**
- AKWBEC06VO**
- AKWBEC05VO**
- AKWBEC02VO**



Explore the full range and specification online!



By **WF** Education Group

WorkBench Standard

Mobile workbench specifically designed for practical education. Create truly flexible, future-proof spaces for technical subjects.



- Onyx Grey Panels / Concrete Grey Worktop
- Kiwi Green Panels / Concrete Grey Worktop
- Smoke Blue Panels / Concrete Grey Worktop
- Onyx Grey Panels / Vicenza Oak Worktop
- Kiwi Green Panels / Vicenza Oak Worktop
- Smoke Blue Panels / Vicenza Oak Worktop

- AKWBSC06CG**
- AKWBSC05CG**
- AKWBSC02C**
- AKWBSC06VO**
- AKWBSC05VO**
- AKWBSC02VO**

StorageBench

Mobile workbench designed with full underbench, lockable storage. Make the most of storage space where only standing is required. Great for plug and play equipment like 3D printers and plastic forming equipment and their consumables.



- Onyx Grey Panels / Concrete Grey Worktop
- Kiwi Green Panels / Concrete Grey Worktop
- Smoke Blue Panels / Concrete Grey Worktop
- Onyx Grey Panels / Vicenza Oak Worktop
- Kiwi Green Panels / Vicenza Oak Worktop
- Smoke Blue Panels / Vicenza Oak Worktop

- AKWBSTC06CG**
- AKWBSTC05CG**
- AKWBSTC02CG**
- AKWBSTC06VO**
- AKWBSTC05VO**
- AKWBSTC02VO**

WorkBench Lite

Lightweight, mobile workbench designed for lighter applications where storage and easy-access power are not required.



- Concrete Grey Worktop **AKWBLCG**
- Vicenza Oak Worktop **VAKWBLVO**

ShapeBench

A lightweight workbench designed to bring greater flexibility to spaces by facilitating a wider range of layouts. Ideal for creating presentation layouts and for lighter activities such as computer-aided-design, coding and drawing. Dimensions 1500 x 850 x 650 (L x h x w) each short edge is 750mm.



- Concrete Grey Worktop **AKSBCG**
- Vicenza Oak Worktop **AKSBVO**

WorkBench with Shallow Storage

Mobile workbench designed with shallow under-bench storage; ideal for applications when user is seated, but storage is still required.



- Onyx Grey Panels / Concrete Grey Worktop
- Kiwi Green Panels / Concrete Grey Worktop
- Smoke Blue Panels / Concrete Grey Worktop
- Onyx Grey Panels / Vicenza Oak Worktop
- Kiwi Green Panels / Vicenza Oak Worktop
- Smoke Blue Panels / Vicenza Oak Worktop

- AKWBSSC06CG**
- AKWBSSC05CG**
- AKWBSSC02CG**
- AKWBSSC06VO**
- AKWBSSC05VO**
- AKWBSSC02VO**

MiniBench

A half-sized WorkBench designed as an individual workstation. The MiniBench is often used between Machinery WorkBenches to create a safe working zone between the machines themselves. Dimensions: 750 x 750 x 850 mm (L x w x h).



- Onyx Grey Panels / Concrete Grey Worktop **AKWBMINIC06CG**

Standard, Lite, Elite, Shallow Storage and Storage benches are (LxWxH) 1500 x 850 x 750mm



Images from St Margaret's School



Technical, Practical Learning Spaces How to stand out from the crowd!

Creating 'outstanding' Design and Technology / STEAM spaces requires a thoughtful blend of innovation, functionality, and flexibility to inspire students and support a diverse range of creative, practical, and technological learning experiences.

Exceptional spaces not only foster improved learning environments for both students and teachers but also play a key role in attracting families to choose your school over others. Our guide explores the importance of implementing a cohesive aesthetic design and incorporating personalisation to elevate your technical and practical spaces.



Download our NEW
Aesthetics Guide

Personalise your space with **akira**TM



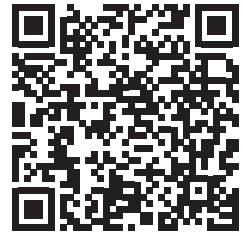
Explore our installation success stories!

Don't just take our word for it...

With our extensive expertise in designing and installing cutting-edge D&T and STEAM spaces, the WF Education projects team is here to guide you through every step of the process, from concept to completion.

Browse our downloadable case studies to see how we have helped bring visions to life and transformed practical educational spaces - from refurbishments to new builds.

Explore ALL of our case studies and testimonials online...



Learn more about WF workshop installations online...

"I am confident and impressed in the servicing and testing of our equipment and machines by WF engineers, which makes me feel comfortable that staff and children can use them safely and effectively."

King John Middle School





Servicing and Maintenance

Ensuring your equipment is serviced and maintained regularly, is essential for prolonging the life of your machines, retaining full Health & Safety compliance, and ultimately keeping your students and staff safe.

With years of experience working with schools, colleges and universities across the UK, we offer a wide range of maintenance services to cover all your needs!

Our unrivalled tailored packages will help you budget for the future with reports on the condition of every machine.

We co-ordinate all activities to ensure work is undertaken to meet your needs and any legal requirements.

Explore our full range of services today...



Get in touch

e: maintenance@wf-education.com **t:** 01743 453 253

Sign up for our newsletter to be the first to hear of our seasonal discounts and offers!

Our teams of engineers can be booked to carry out servicing and maintenance at a time to suit you and the needs of your department. Our services are available throughout the year, including during school holidays.

20% off Maintenance & Servicing*

**The offer applies only to work carried out in term time. Holidays and bank holidays will not apply. New customers only. Offer ends 30/04/25*

***Exclusions apply to services that have already been booked and to customers with existing 3 or 5-year contracts. This offer does not apply to more specialist services such as heat bays, laser cutters, sewing machines, fume cupboards, garage, and kiln equipment.*

Book your visit today:



Return Address
WF Education Group
Phoenix House
Stafford Drive,
Battlefield Enterprise Park
Shrewsbury
SY1 3FE



We create outstanding **specialist** learning spaces for D&T...

We are specialists in designing for high functioning spaces in accordance with the safety requirements set out in BS 4163:2021 and the Department for Education's Building Bulletin guidelines.

Our proprietary systems, in-house manufacturing and off-site assembly result in highly competitive lead times and, often, high speed, short timeframe installations.

...why not discuss your space with our team?



These mailers are
100% recyclable

 shop.wf-education.com/dnt

 customer.support@wf-education.com

 +44 (0) 1743 812 200



Return Address
Phoenix House
Stafford Drive,
Battlefield Enterprise Park
Shrewsbury
SY1 3FE

To unsubscribe from these mailers, please simply email: customer.support@wf-education.com with your full address.